



Ran BP-17 Polyclonal Antibody

Catalog No	YP-Ab-16222
Isotype	IgG
Reactivity	Human;Mouse
Applications	WB;IHC
Gene Name	RANBP17
Protein Name	Ran-binding protein 17
Immunogen	The antiserum was produced against synthesized peptide derived from human RANBP17. AA range:145-194
Specificity	Ran BP-17 Polyclonal Antibody detects endogenous levels of Ran BP-17 protein.
Formulation	Liquid in PBS containing 50% glycerol, 0.5% BSA and 0.02% sodium azide.
Source	Polyclonal, Rabbit,IgG
Purification	The antibody was affinity-purified from rabbit antiserum by affinity-chromatography using epitope-specific immunogen.
Dilution	WB 1:500-2000;IHC-p 1:50-300
Concentration	1 mg/ml
Purity	≥90%
Storage Stability	-20°C/1 year
Synonyms	RANBP17; Ran-binding protein 17
Observed Band	125kD
Cell Pathway	Cytoplasm . Nucleus . Nucleus, nuclear pore complex .
Tissue Specificity	Highly expressed in testis, moderately in pancreas and weakly in other tissues studied.
Function	function:May function as a nuclear transport receptor.,similarity:Belongs to the exportin family.,subunit:Binds to nucleoporins and the GTP-bound form of Ran.,tissue specificity:Highly expressed in testis, moderately in pancreas and weakly in other tissues studied.,
Background	RAN binding protein 17(RANBP17) Homo sapiens The transport of protein and large RNAs through the nuclear pore complexes (NPC) is an energy-dependent and regulated process. The import of proteins with a nuclear localization signal (NLS) is accomplished by recognition of one or more clusters of basic amino acids by the importin-alpha/beta complex; see MIM 600685 and MIM 602738. The small GTPase RAN (MIM 601179) plays a key role in NLS-dependent protein import. RAN-binding protein-17 is a member of the importin-beta superfamily of nuclear transport receptors.[supplied by OMIM, Jul 2002],



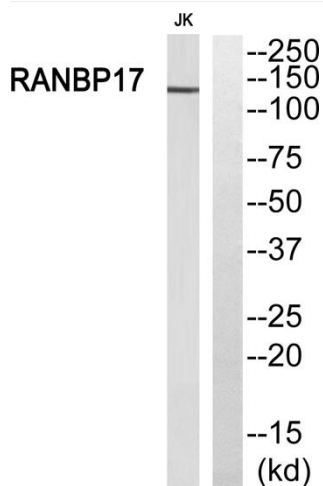
matters needing attention

Avoid repeated freezing and thawing!

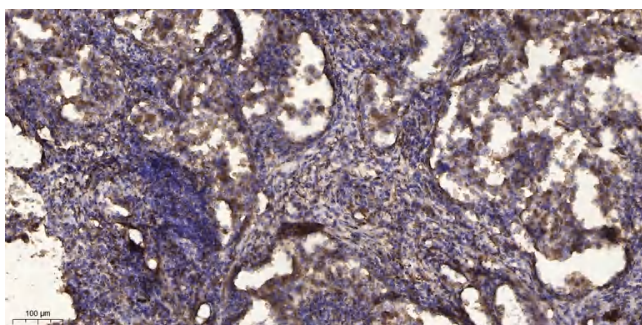
Usage suggestions

This product can be used in immunological reaction related experiments. For more information, please consult technical personnel.

Products Images



Western blot analysis of RANBP17 Antibody. The lane on the right is blocked with the RANBP17 peptide.



Immunohistochemical analysis of paraffin-embedded human Squamous cell carcinoma of lung. 1, Antibody was diluted at 1:200(4° overnight). 2, Tris-EDTA,pH9.0 was used for antigen retrieval. 3,Secondary antibody was diluted at 1:200(room temperature, 45min).